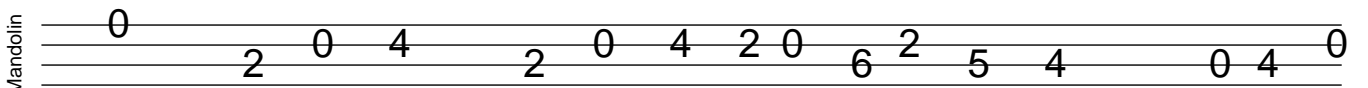
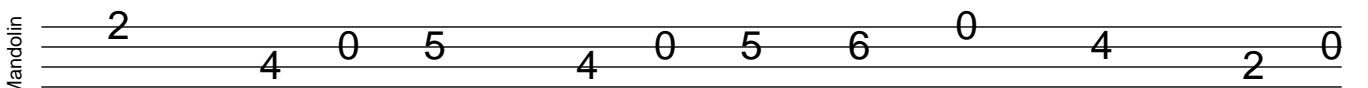
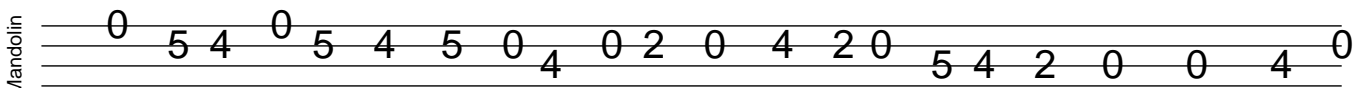
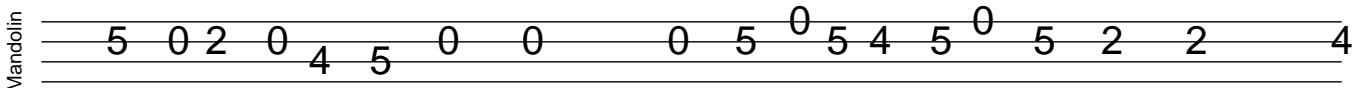
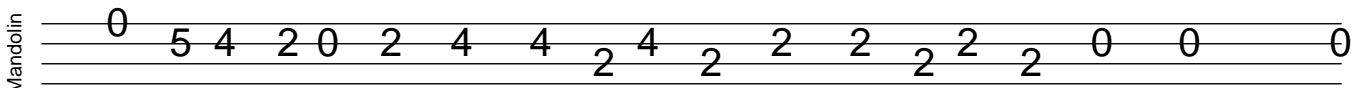
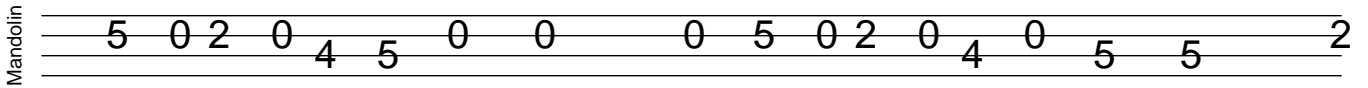
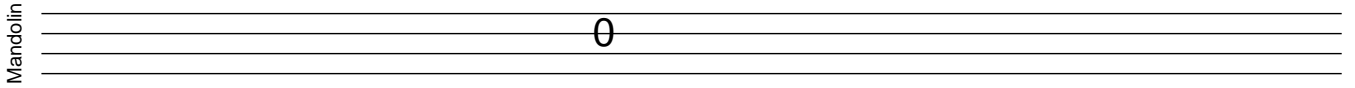
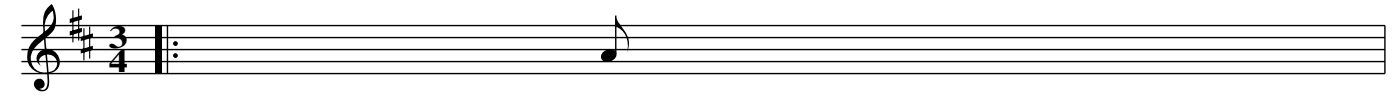


Mazurca Di Zavattarello

mandolintab.net



Musical staff with treble clef and key signature of one sharp (F#). The staff contains a sequence of notes: a half note G4, followed by eighth notes A4 and B4, then a half note C5, followed by eighth notes D5 and E5, then a half note F#5, and finally a half note G5.

Mandolin tablature for the first staff, showing fret numbers: 2, 4, 0, 5, 4, 0, 5, 6, 0, 2.

Musical staff with treble clef and key signature of one sharp (F#). The staff contains a sequence of eighth notes: G4, A4, B4, C5, D5, E5, F#5, G5, followed by a triplet of eighth notes (G5, A5, B5), another triplet (C6, D6, E6), and finally a half note G5.

Mandolin tablature for the second staff, showing fret numbers: 0, 5, 4, 0, 5, 4, 5, 0, 4, 0, 2, 0, 4, 2, 0, 2, 0, 5, 4, 2, 0, 0.

Musical staff with treble clef and key signature of one sharp (F#). The staff contains a double bar line, a repeat sign, and a single eighth note G4.

Mandolin tablature for the third staff, showing a single fret number: 5.

Musical staff with treble clef and key signature of one sharp (F#). The staff contains a sequence of eighth notes: G4, A4, B4, C5, D5, E5, F#5, G5, followed by a triplet of eighth notes (G5, A5, B5), and finally a half note G5.

Mandolin tablature for the fourth staff, showing fret numbers: 3, 5, 0, 5, 2, 0, 5, 5, 5, 2, 3, 5, 3, 5, 0, 5, 2, 5, 3, 3, 0.

Musical staff with treble clef and key signature of one sharp (F#). The staff contains a sequence of eighth notes: G4, A4, B4, C5, D5, E5, F#5, G5, followed by a triplet of eighth notes (G5, A5, B5), and finally a half note G5.

Mandolin tablature for the fifth staff, showing fret numbers: 5, 3, 2, 0, 5, 0, 2, 2, 0, 2, 0, 0, 0, 0, 0, 0, 5, 5, 0, 2, 3, 5.

Musical staff with treble clef and key signature of one sharp (F#). The staff contains a sequence of eighth notes: G4, A4, B4, C5, D5, E5, F#5, G5, followed by a triplet of eighth notes (G5, A5, B5), and finally a half note G5.

Mandolin tablature for the sixth staff, showing fret numbers: 3, 5, 0, 5, 2, 0, 5, 5, 2, 3, 2, 3, 5, 3, 0, 0, 3, 0.

Musical staff with treble clef and key signature of one sharp (F#). The staff contains a sequence of eighth notes: G4, A4, B4, C5, D5, E5, F#5, G5, followed by a triplet of eighth notes (G5, A5, B5), another triplet (C6, D6, E6), and finally a half note G5.

Mandolin tablature for the seventh staff, showing fret numbers: 5, 3, 2, 5, 3, 2, 3, 5, 2, 3, 5, 0, 5, 2, 0, 5, 3, 0, 4, 0, 5, 5, 2, 3, 5.

Musical staff with treble clef and key signature of one sharp (F#). The melody consists of eighth and quarter notes. There are two triplet markings (3) under the first and last groups of notes.

Mandolin tablature for the first system: 7 7 2 3 5 3 3 2 5 3 0 4 0 5 0 2 2 0 3 0

Musical staff with treble clef and key signature of one sharp (F#). The melody continues with eighth and quarter notes. There are two triplet markings (3) under the first and last groups of notes.

Mandolin tablature for the second system: 5 5 0 3 5 2 2 0 5 2 0 5 0 0 3 2 5 2 3 5

Musical staff with treble clef and key signature of one sharp (F#). The melody continues with eighth and quarter notes. There is a triplet marking (3) under a group of notes.

Mandolin tablature for the third system: 7 7 2 5 3 3 2 3 5 3 2 1 0 0 3 0

Musical staff with treble clef and key signature of one sharp (F#). The melody continues with eighth and quarter notes. There are four triplet markings (3) under groups of notes.

Mandolin tablature for the fourth system: 5 3 2 5 3 2 3 5 2 3 5 2 3 5 2 0 5 3 2 0 4 5 0 5 5